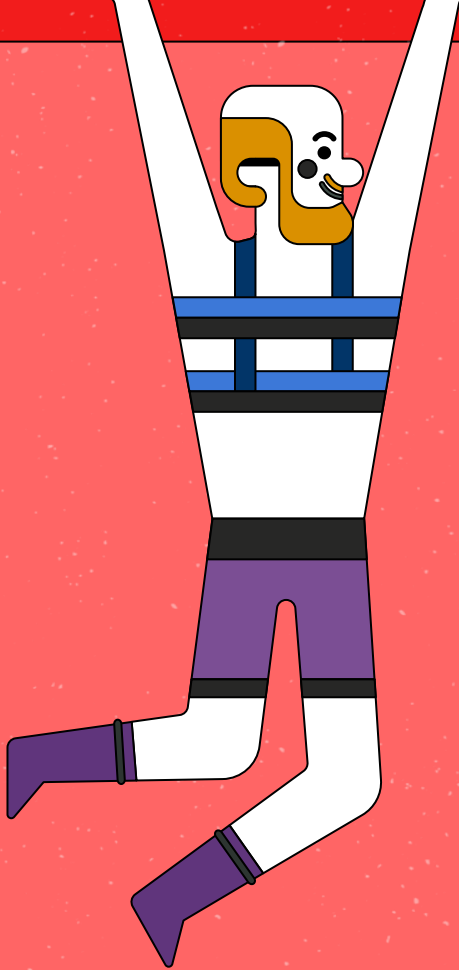




2SLGBTIAP+ Pride Month Celebration

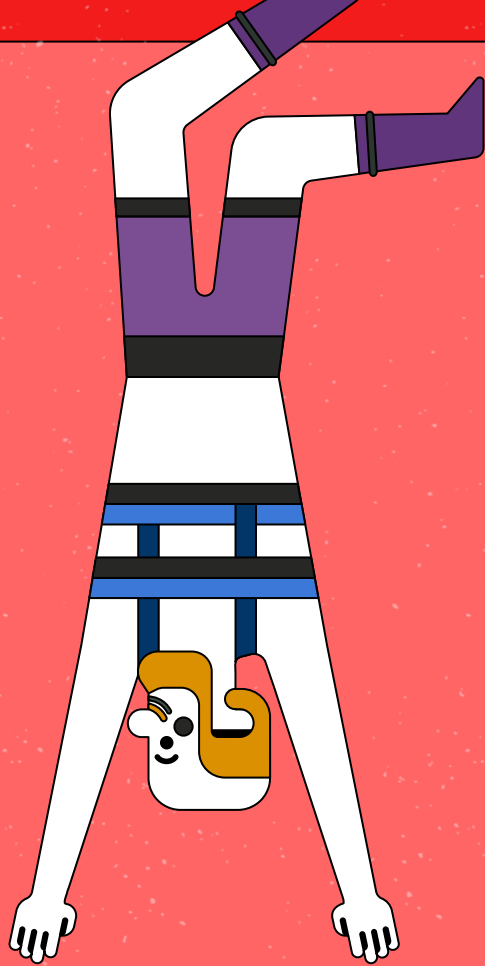
Walden Behavioral
Care



01

INTRODUCING PRIDE MONTH!

June is Pride Month, when the world's 2SLGBTIAP+ communities come together and celebrate the freedom to be themselves.



LET'S BE PROUD OF OURSELVES!



LOVE ALWAYS WINS



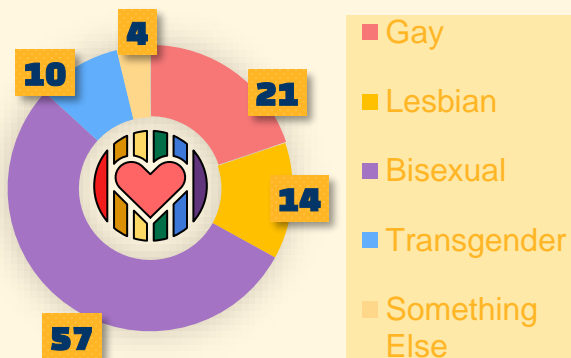
WAVE YOUR FLAG!



DEFINITIONS AND DEMOGRAPHICS



Percentage of LGBTQ Community



A February 2022 Gallup poll reported that 7.1% of US adults identify as 2SLGBTIAP+.

GAY

The adjective used to describe people whose enduring physical, romantic, and/or emotional attractions are to people of the same sex.

LESBIAN

A woman whose enduring physical, romantic, and/or emotional attraction is to other women.

QUEER

An umbrella term for sexual and gender identities that are not heterosexual or cisgender.

BISEXUAL

A person who has the capacity to form enduring physical, romantic, and/or emotional attractions to those of the same gender or to those of another gender.

TRANSGENDER

An umbrella term for people whose gender identity and/or gender expression differs from what is typically associated with the sex they were assigned at birth.

NON BINARY

Some people may identify as both male and female or neither male nor female.

Gender Non-Conforming

Some people whose behavior or appearance does not conform to prevailing cultural and social expectations about what is appropriate to their gender

EVERYONE IS CELEBRATING!



More about sexuality and gender descriptors.

DEMISEXUAL



Individuals who feel sexually attracted to somebody if they have an emotional bond with the person.



GENDER-FLUID



Denoting or relating to a person who does not identify themselves as having a fixed gender.

ASEXUAL



An asexual person might not experience sexual attraction, but they might still experience romantic attraction.



PANSEXUAL



Someone who is attracted – either emotionally, physically or both – to all genders.

SOME FLAGS OF THE COMMUNITY



BISEXUAL



DEMISEXUAL



GENDER-FLUID



LESBIAN



ASEXUAL



QUEER



02

ABOUT THIS AWESOME MONTH

Pride Month is in celebration of lesbian, gay, bisexual, transgender, and queer people—and the history, culture, and contributions of these people and their communities.

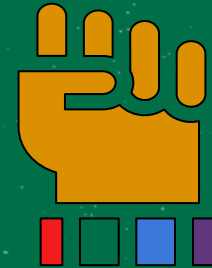


WHAT IS IT AND WHY?



WHAT IS IT ALL ABOUT?

Pride Month is an entire month dedicated to the uplifting of 2SLGBTQIAP+ voices, celebration of Queer culture and the support of Queer rights.



WHY JUNE?

We celebrate in June to coincide with the catalyst of the Gay Liberation Movement that was the Stonewall Uprising.



#LOVEISLOVE



Express yourself the way you are!





03

2SLGBTIAP+ COMMUNITY

Walden is fighting to be a supportive ally
for patients and staff alike.

WALDEN'S 2SLGBTIAP+ PRIORITIES



Walden Behavioral Care earns “LGBTQ Healthcare Equality Leader” Designation in Human Rights Campaign Foundation’s 2020 Healthcare Equality Index

FREEDOM



EDUCATION

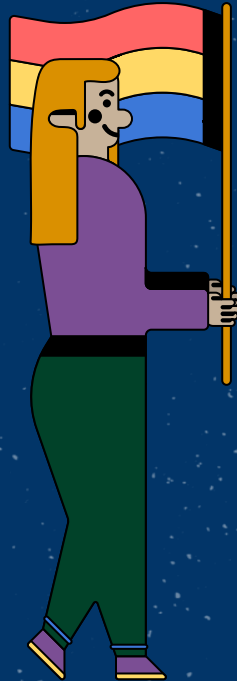
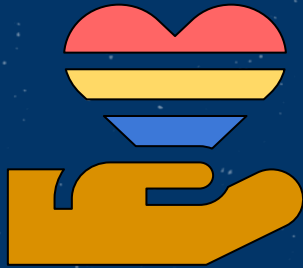


ALLYSHIP



ACCEPTANCE

WHAT WE DO...



...DEFINES US



- Create an affirming and inclusive environment
- Build cultural shift toward equal rights
- Honor and elevate voices of 2SLGBTQIAP+
- Identify safe spaces
- Include names and pronouns for introductions

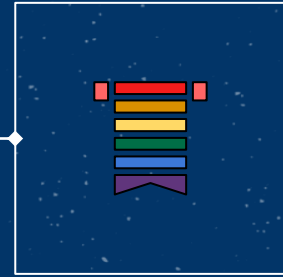
OUR TEAM



M Reim Ifrach
Director Rainbow Road



They/Them



Nat Bush
Lead MHC Rainbow Road



He/Him or They/Them



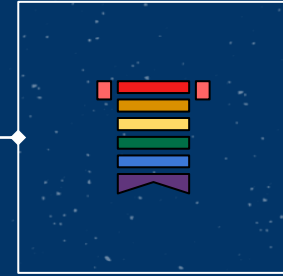
OUR TEAM



Lieba Swartz-Brownstein
Lead Clinician Rainbow Road



They/Them



Emily Taylor
Registered Dietitian



She/Her

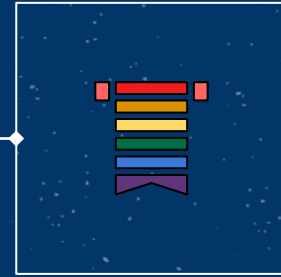


OUR TEAM



Violet Moses
Nurse Practitioner

She/Her



Kaitlyn Doucette
Clinician II Rainbow Road

She/Her





04



THE FACTS

2SLGBTQIAP+ Interesting Facts

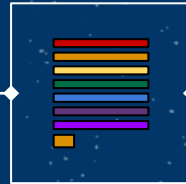
Queer Mental Health and Eating Disorder
Statistics

HISTORY OF THE PRIDE FLAG



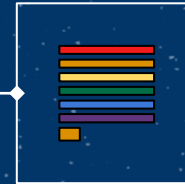
EARLY 1978

Original eight-striped version
designed by Gilbert Baker



MID-1978

Seven-striped version due to
pink fabric unavailability



1970 - PRESENT

Current six-striped version
modified for even stripe split

THE FIRST RAINBOW'S COLORS



PINK



Equals **sexuality**

RED



Equals **life**

ORANGE



Equals **healing**

YELLOW



Equals **the sun**

GREEN



Equals **nature**

BLUE



Equals **art**

INDIGO



Equals **harmony**

VIOLET



Equals **spirit**



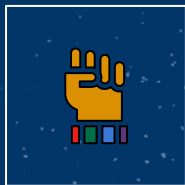
2012

Was established the Non-Binary People's Day



1978

Was the first Pride flag design



05/24

Is the pansexual awareness day



Mental Health and Eating Disorders



50%

Transgender adults reported having made a suicide attempt.

5x

LGB Youth are 5x more likely to attempt suicide

42%

LGB youth are not accepted in their community



54%

2SLGBTIAP+ youth reported Eating Disorders

42%

Males with Eating Disorders identify as gay

71%

Transgender individuals who identify as straight report an Eating Disorder

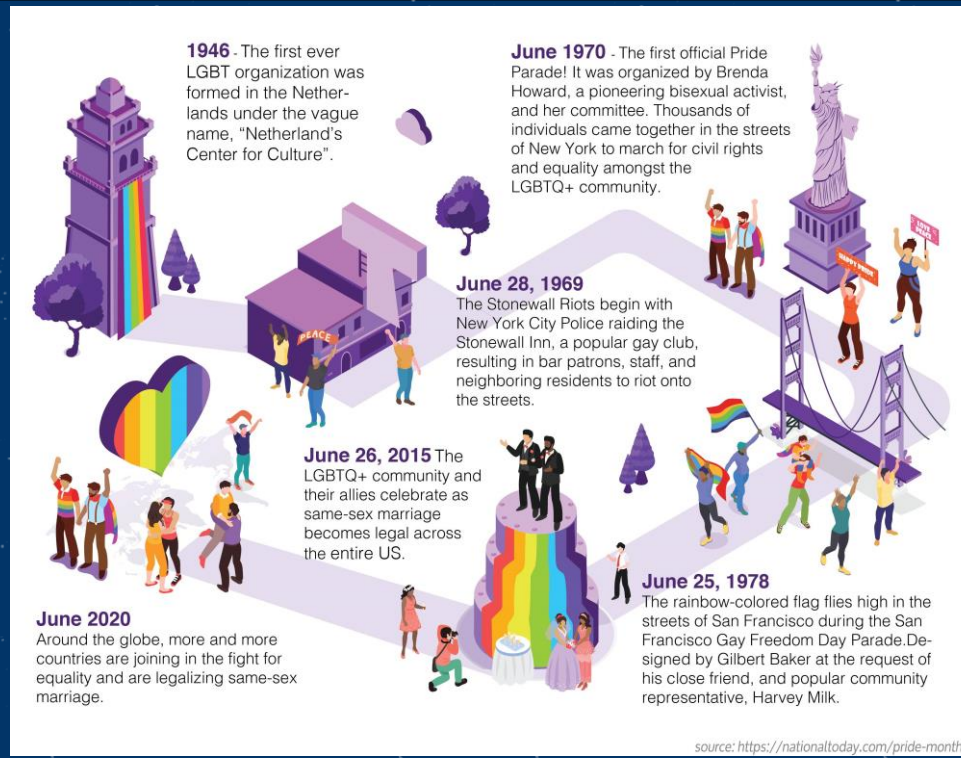


05

2SLGBTQIAP+ HISTORY

Learning from the past to succeed in the
future

HISTORY OF THE 2SLGBTQIAP+ COMMUNITY





JUNE 28, 1970



Was the first Pride Parade

PRIDE HISTORY



STONEWALL



It began in the early hours of June 28, 1969, after police raided the Stonewall Inn bar

RAINBOW



The flag was designed by San Francisco artist Gilbert Baker and has been adopted globally

ALLIES



Acceptance of the LGBTQ community increased among the straight community

“To **be yourself** in a world that is constantly trying to make you something else is the greatest accomplishment”



—A **QUEER** ACTIVIST

IMPORTANT 2SLGBTQIAP+ ACTIVISTS



SYLVIA RIVERA

Was a queer, Latina, self-identified drag queen



MARSHA JOHNSON

Was a black trans woman, a sex worker, and an activist



KARL ULRICHS

The pioneer of the modern gay and the first to "come out"



MICHAEL DILLON

He was the first trans man to undergo phalloplasty



VIRGINIA WOOLF

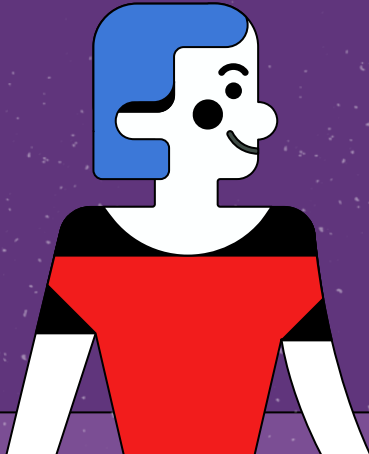
An iconist, bisexual famous writer, married to Leonard Woolf

06

FINAL CONCLUSIONS

BE PROUD OF WHO YOU ARE

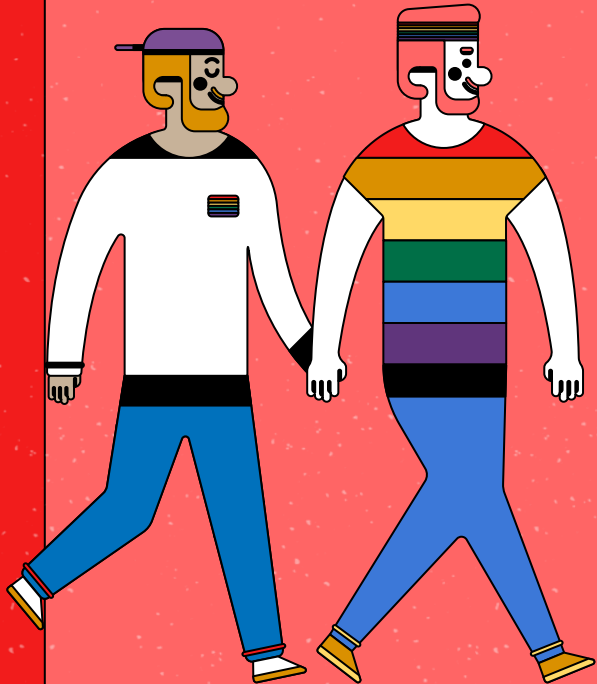
BE AN ALLY



**DON'T EVER BE
AFRAID TO
SHOW OFF YOUR
TRUE COLORS**



BE AN ALLY



Treat people with kindness, respect, and empathy

Listen first

Understand that allyship isn't one-size-fits-all

Be an intersectional ally

Commit to lifelong learning

Reflect on your own privilege



THANKS!

Walden Behavioral Care
Diversity, Equity, and Inclusion Committee

RBernat@waldenbehavioralcare.com
Bwoodfin@waldenbehavioralcare.com

CREDITS: This presentation template was created
by [Slidesgo](#), including icons by [Flaticon](#), and
infographics & images by [Freepik](#)

